

2018

Annual Report
L'Arche Greater Vancouver
and
The L'Arche Foundation of
Greater Vancouver





**Identity and Mission Statement
International Federation of L'Arche Communities:**

Identity Statement:

We are people with and without developmental disabilities, sharing life in communities belonging to an International Federation.

Mutual relationships and trust in God are at the heart of our journey together.

We celebrate the unique value of every person and recognize our need of one another.

Mission Statement:

Our mission is to...

Make known the gifts of people with developmental disabilities, revealed through mutually transforming relationships.

Foster an environment in community that responds to the changing needs of our members, whilst being faithful to the core values of our founding story.

Engage in our diverse cultures, working together toward a more human society.

L'Arche Greater Vancouver **April 1, 2017 - March 31, 2018** **Annual Report**

Table of Contents

1. Message from the President of L'Arche Greater Vancouver	4
2. Message from the President of the L'Arche Foundation of Greater Vancouver	6
3. Message from the Community Leader/ Executive Director	8
4. Reports	
Community Inclusion Programs	10
Human Resources	12
Residential Programs	15
6. Our Homes	16
7. Our Big Numbers	18
8. Our Financial Picture	20
9. Our Corporate and Community Supporters	22

President of L'Arche Greater Vancouver

This has been a historic year in the life of L'Arche Greater Vancouver. Collectively we have embraced an expanded vision, one that includes a growing of our mission into the wider community. This growth will occur through our intention to provide housing and support for individuals with a disability who can live semi-independently, as well as our commitment to include 29 units of affordable housing in our redevelopment project. With this new model, many more individuals, couples and families will experience the richness and fullness of living in an intentional community.



The LGV society has been well served by our current and committed board of directors – Dan Kirkegaard, Garth Evans, Jim Lattimer, Paul Mosca, Tom Nowak, Jo-Ann Tait, Angela Uruski-Girard and Ken Lee. My gratitude to all of you for your passion, patience and persistence as we've grappled with the many decisions required to advance our redevelopment project. I am especially grateful to Dan Kirkegaard for so capably chairing the board meetings and providing needed leadership and support when my attention was focused on the capital campaign and redevelopment project.

The board of directors has also generously stepped forward to support our capital campaign through their donations of time, talent and treasure. A campaign of this size needs strong leadership and support to be successful. Fortunately we are blessed to have both in abundance.

In spite of all the demands of a capital campaign, project development, and work on a new Community Mandate, the L'Arche community responded beautifully to the challenges which is a testament to their strength and resilience. I am consistently impressed by the dedication and care that permeates L'Arche locally, regionally, and nationally.

I also wish to acknowledge the care, competence and commitment of the leadership team at L'Arche and the entire L'Arche community

during this time of change as we look with hope toward the future. I witnessed a strong sense of collaboration and increasing community resilience during this time. My gratitude and respect to all of you.

I am privileged to work with my Board colleagues and all of the L'Arche Greater Vancouver community in creating a kinder, gentler and more compassionate community. I look forward to what we can accomplish in the year ahead.

In gratitude,

Ted Kuntz
President

L'Arche Greater Vancouver Board of Directors

Garth Evans
Denise Haskett
Dan Kirkegaard
Ted Kuntz
Jim Lattimer
Ken Lee
Paul Mosca
Tom Nowak
Angela Uruski-Girard

President of the L'Arche Foundation of Greater Vancouver

This year has been one of moving forward with much excitement and new challenges. I am proud to be a part of this incredible team of community builders. As we celebrate 43 years of L'Arche in Vancouver, we reflect on our past, evaluate our present and build our hope for the future.



In April 2017 we held our famous “Art Together” show. Once again our artists with and without developmental disabilities wowed everyone with their talents. Our venue was the Amelia Douglas Gallery at the Douglas College campus in New Westminster. The show was followed up with a lengthy article in the college newspaper and some of our artists were interviewed by students from the Therapeutic Recreation Program.

June came quite quickly with our Community Retreat at the Zajac Ranch in Maple Ridge. I was honoured to attend for two days and witnessed a tremendous expression of community connection. We had so much fun! This is where our donors make a difference.

Fall arrived bringing with it our tradition of the Ark Builders brunch for our major donors. It was an opportunity to update everyone on our exciting plans for the future new building. The fall also gives us the opportunity to host our Solidarity Benefit Concert. We had a beautiful evening with Wyndham Thiessen and John Coleman. Both are singer/songwriters with strong national and international connections to L'Arche.

In November the Foundation and Operations boards met to work on our plans for the new building for L'Arche. This vision will ensure a safe and accessible building for L'Arche for the next 50 years!

Our Community Theme verse from Isaiah 43:19 gives us direction and support:

*I am about to do something new.
 It is beginning to happen even now.
 Don't you see it coming?
 I am going to make a way for you to go through the desert.
 I will make streams of water in the dry and empty land.*

This verse is quoted in our new mandate and I believe it has a message for our community. To me it says “Go for it”. Our journey going forward brings promises for a bright future. All that is involved will allow us to view the challenges as exciting opportunities for positive change. The work ahead will not be easy, but we are definitely up for the challenge.

A big thank you to our personnel and volunteers who provide dedication, passion and compassion that remains constant with new challenges. Thank you to our core members who teach us more every day.

We are blessed by our donors and supporters who are committed to L’Arche. You are the stars of the show. Thank you all for sharing our dream!

In deep gratitude and resolve,

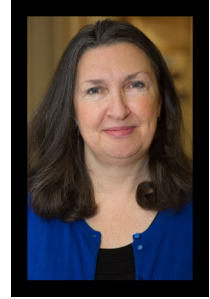
Audrey Staudacher
 President

L’Arche Foundation of Greater Vancouver Board of Directors

Denise Haskett
 Jennifer Hermkens
 Joan Isac
 Ted Kuntz
 Jim Lattimer
 Audrey Staudacher

Community Leader/Executive Director

I write this with gratitude for both the joys and the challenges of the past year, and look forward with hope as we are called to grow and live our mission in new ways.



In May 2017, after much consultation with community members and the Board, the Mandate Committee, presented us with a new four year mandate. Aligned with the L'Arche International Mandate, the new mandate calls us to grow in three main areas. The first is to 'go deeper' in strengthening unity and trust through building and nurturing relationships both within and beyond our roles. This area also articulates the need to encourage and develop leadership among all community members. The second calls us to 'go within' embracing an attitude of abundance, appreciating each other and all that we have. In order to enhance our lives together the mandate also calls for a review of the structures that support us, including creating some new roles. As we journey together through the changes ahead, the mandate emphasizes the importance of safe guarding our core values while simplifying processes and rhythms in our community life. The third area challenges us, to 'go out' and try new ways of expressing our mission in our current outreach and community inclusion activities and as we prepare to welcome more people to live in the new building.

A new role, Community Programs Director, was created to support the community as my energies and time will continue to focus on moving the building project and the capital campaign forward. I am grateful to Annette Kuhn for taking this role in the New Year and for sharing her diverse L'Arche experience, wisdom and leadership gifts with us.

In the spring of 2017 we began work with Waller and Associates to develop a strategy for a major capital campaign for the new building. A feasibility study was conducted and major supporters were identified. We developed our case for support and other campaign materials. We have been blessed with exceptional volunteers on our Campaign Committee.

Over the summer and fall an organizational consultant facilitated several sessions related to our new mandate that were focussed on communication, nurturing relationships, simplifying community life and reviewing structures.

The New Year saw us preparing for our accreditation survey which happens every three years. I am very grateful to the leadership team and all the people who worked so hard to get us ready.

I wish to express my appreciation to our fabulous Board members on both the Foundation and Operations board, for their dedication, guidance and courage.

This year called for flexibility, creativity and discerning hearts as we charted unknown waters. As we engage with the journey ahead, I am grateful to each and every person. We are in a time of major transformation that invites us to step out in trust and work together to realize our dream. It is an honour to be in the boat with you.

I am deeply inspired by our community theme verse from Isaiah 43 vs 19 'I am about to create something new, it is beginning to happen even now'. Indeed this is so!

Denise Haskett
Community Leader/Executive Director

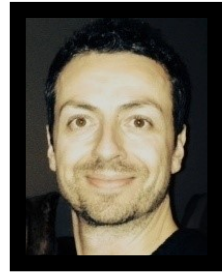


Neighbours Helping Neighbours



The Emmaus Day Program

The participants in our Emmaus Centre and Neighbours Helping Neighbours (NHN) Community Inclusion Programs have a strong desire to help others and to connect with those they meet. While people with disabilities are often the receivers of services, participation in our Community Inclusion Programs gives people many opportunities to be the providers of services by sharing their gifts with the greater community.



Below are some of the ways we served this past year.

- NHN provided yard maintenance, recycling, snow removal and grocery shopping to 45 customers – giving 1,144 hours.
- Emmaus offered recycling services, delivered 135 meals for Meals on Wheels, and baked hundreds of cookies to share with people at a local Food Bank – giving 220 hours.
- People volunteered regularly at the Senior Services Society, Jubilee United Church, New Vista Society, Fair Haven Homes and Collingwood Neighbourhood House.

While the numbers are striking, there is an even deeper impact in the relationships that were formed and strengthened among program participants and the wider community. They shared their gifts of compassion, creativity and enthusiasm, and contributed to our mission of creating a more human society.

One particularly touching story was the relationship the NHN team built with a senior who was a neighbour of one of our L'Arche homes for many years. The team tended her garden every week and she would often thank them with a trip to Tim Horton's. When she took ill last year, the team not only continued to take care of her garden, but they visited her almost daily in hospice. They became like family and stood by her in her last days.

Emmaus welcomed two new participants and two new assistants in the past year. It was beautiful to see the warm welcome, trust, and respect given to each new member. In keeping with the community theme, our Community Inclusion Programs teams truly made "streams of water in the dry and empty land."

Peter McKinley
Director of Day Programs

Human Resources in Numbers

Number of Permanent Personnel : **49**
Number of Casual Support Personnel: **16**
Number of Volunteer Hours: **1385**

Length of Service

1 year 9	2-4 years 7	4-8 years 6	8+years 27
--------------------	-----------------------	-----------------------	----------------------

Age Groups

19-30 8	31-40 13	36-50 11	51-60 10	61+ 7
-------------------	--------------------	--------------------	--------------------	-----------------



Human Resources

At L'Arche we continue to look for candidates who are not just looking for a job, but want to share their lives with people with disabilities in community. L'Arche is a place where assistants often arrive thinking, "I'll spend a year here and then go on with my life", but then a year passes and another and another, and they realize there is still more to learn, receive and contribute. We faced many changes and new beginnings this past year:



- We welcomed seven new Assistants, and two Assistants who had been in our community before; three were from Canada and six international Assistants.
- In addition we welcomed a co-op practicum student from Ontario for four months, a Mennonite Central Committee volunteer for one year and a summer assistant for three months.
- I took on the role of Community Programs Director to allow the Community Leader to focus on the capital campaign and building project.
- Tammi Kitching was hired for the position of Training and Formation Coordinator.

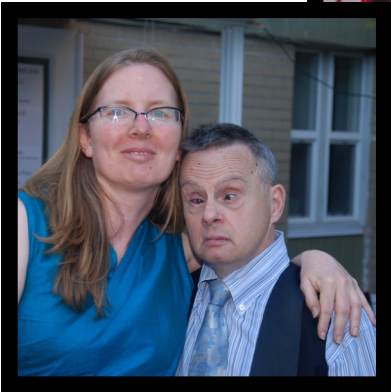
We continued to experience challenges in recruiting casual support staff and Canadian assistants. Human Resources organized a number of assistant training sessions that included:

- Living with Change
- Aging and Finding Purpose
- Understanding Anxiety
- Receiving and Giving Feedback

L'Arche Canada did extensive training on Servant Leadership in each region across Canada. This included a Servant Leader website that provides resources and support for team leaders and assistants.

I am very grateful to Peter McKinley, Akiko Iwataki and Annelise Jacky for their servant-centered leadership of our Community Inclusion, Residential, and Community Life Programs. I would also like to acknowledge the contributions of Tammi in our training and formation program and Tao for overall Human Resources administration. It was a year of growth and change and the generosity and flexibility of everyone ensured a smooth journey for all of us.

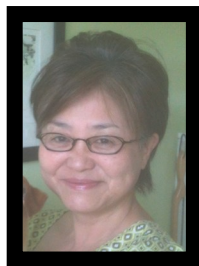
Annette Kuhn
Director of Human Resources



Residential Programs

Our 2018 Community Theme Verse seemed to be written for Residential Programs. The year was characterized by change, challenge and new beginnings.

We bid farewell to a long-term house leader who went on maternity leave as well as several assistants. We welcomed nine new assistants, three from Canada and six from abroad.



Akiko Iwataki

We also welcomed a long-time friend of the community to one of our homes who required respite care, which is a new service we are offering. It has proven to be a positive community building experience for all.

The greatest challenge, which brought new beginnings for most of our homes, was the preparation for relocation of the people of Unity and Bethel Houses as we prepare for the redevelopment of our Shiloah property.



Landys Klyne

Considerable time was spent in conversation with people and their families to ensure a smooth transition for everyone, including dialogue with people in the three homes where the people were received. The entire transition process was inclusive, consultative and respectful of the needs of everyone involved. Evidence of this is the happiness expressed by those who moved and the joy shared with those who welcomed them.

Servant Leadership was demonstrated in all of the homes this past year, as the house leaders and assistants at Unity and Bethel made sure the moves were smooth and our core members felt respected and happy. The teams at Crossing, Creation, Nazirah and Emily House worked equally hard to ensure the members felt welcomed as part of their new family.

I wish to add a final note of gratitude to Landys Klyne who left L'Arche to prepare for her move to Hornby Island. Her strengths and gifts added a new dimension to Residential Programs, and we all miss her very much.

Akiko Iwataki and Landys Klyne
Directors of Residential Programs

Our Homes

Creation House



The Crossing



Emily House



Nazirah House



Peniel House



Our Big Numbers

Creation House

Guy walked **287** times around Creation House with his new walker

We ate **1920** bananas in Creation. It's our favourite fruit

Our ladies painted their nails **84** times

Creation House members have visited coffee shops **1452** times

The Crossing

We enjoyed **78** outings together on the weekends

We watched **55** movies together

We welcomed **60** guests for dinner

Emily House

Philip watched the Jesus story with housemates **25** times

Rosie and Mary spent **6650** minutes doing evening exercises

Melina and Philip spent **3500** minutes unloading the dishwasher

Emily House saw the same bear **3** times during 3 days of their vacation

Nazirah House

We had **14** Big celebrations of birthdays, anniversaries, and other special events

We welcomed **50** guests for dinner

We went on **50** outings - for coffee, watching airplanes take off, Foreshore Park walks, and aquarium visits

Our Big Numbers

Peniel House

We went out for coffee and company **118** times

We welcomed friends for meals **115** times

We went grocery shopping together **77** times

Emmaus Centre

We hosted **28** Friday lunches with **106** guests

Made **32** Meals on Wheels trips delivering **160** meals

We served hundreds of our home-made cookies at the Food Bank's Hospitality Program **22 times**

30 Solidarity Recycling Trips

Neighbours Helping Neighbours

Delivered **135** meals for Meals on Wheels

Volunteered **144** hours for Collingwood Neighbourhood House

Cut **181** lawns

Raked leaves and did weeding **91** times

Transported customers' yard waste to Garbage and Recycling Centres **36** times

Went grocery shopping with or for customers **27** times

Provided service for **45** customers

Community Life

We held **43** Community prayers where we sang 275 songs!

17 people went on personal retreats

80 people attended our Community Retreat at Zajak Ranch

Our Financial Picture

L’Arche Greater Vancouver— The Big Numbers—Audited

Our Financial Picture

L’Arche Greater Vancouver - The Big Numbers - Audited

Year ended
March 31, 2018

Revenues

Provincial Grants	\$ 2,591,611
Donations from L’Arche Foundation of Greater Vancouver	101,065
Other	251,146
	<u>2,943,822</u>

Expenses

Direct program costs	2,192,696
Facility costs	326,775
Administrative costs	413,008
	<u>2,932,479</u>

Excess (Deficiency) of revenue over expenses	<u>\$ 11,343</u>
--	------------------

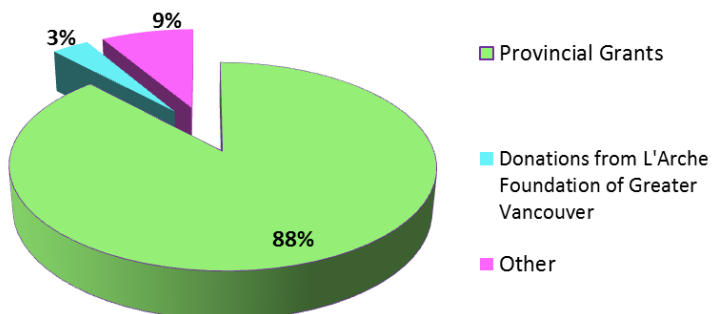
Numbers taken from L’Arche Greater Vancouver’s Audited Financial Statements for the year ended March 31, 2018

L’Arche Greater Vancouver is assisted in its mission by the L’Arche Foundation of Greater Vancouver, a registered charity dedicated to finding funds from non-government sources in support of L’Arche Greater Vancouver. The Foundation is responsible for building modernization and improvements as well as new building projects.

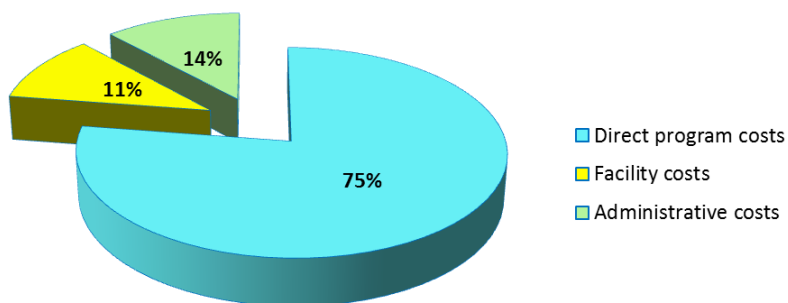
Full audited financial statements for L’Arche Greater Vancouver and the L’Arche Foundation of Greater Vancouver are available upon request.

Our Financial Picture

L'Arche Greater Vancouver - Revenues



L'Arche Greater Vancouver - Expenses



Our Corporate and Community Supporters

Agape Catholic Charities Fund held at Vancouver Foundation	Columbia Bowell Funeral Chapel
Andrew Mahon Foundation	Community Living BC
Archdiocese of Vancouver	Corpus Christi College Society
BC Housing	D & D Reesor Family Holdings Inc.
Burnaby Firefighters Charitable Society LTD	Digitally Hip Corporation
C.W.L. of Canada O.L.P.H Council	Dominicans of St. Mary's
Catholic Women's League	First Christian Reformed Church of New Westminster
CWL of St. Mary's Parish	God With Us Inc
CWL of St Peter's Parish	Grace Lutheran Church of South Burnaby
Celtic Cross Charitable Foundation	GVC Credit Union
Cob's Bread (Marine Way)	Holy Cross C.W.L.

Our Corporate and Community Supporters

J & G Servant Foundation	Sisters of the Child Jesus
Knights of Columbus, Fraser Valley Council, No. 2552	St. Anthony of Padua Fraternity, S.F.O.
Knights of Columbus, No. 8853	St. Francis de Sales Catholic Women's League
Mackin Creek Farm	St. John's Anglican Church ACW
Mauro Family Fund, held at The Winnipeg Foundation	St. Joseph the Worker Parish
Mount Pleasant War Memorial Community	Team Telus Cares
Provincial Employees Community Services Fund	The Benevity Community Impact Fund
Quasar Financial Planning Group	United Way of Calgary and Area
Rexall Health Solutions	United Way Toronto & York Region
Saint Mary's Health Foundation	VanCity Community Foundation
SCWH Holdings Ltd.	Vancity, South Slope Branch
Sisters of St. Ann	Virginia's Arc Private Foundation



L'Arche Foundation of Greater Vancouver

7401 Sussex Avenue, Burnaby BC
V5J 3V6 604-435-9544
www.larchevancouver.org

Charitable Registration No. 137648671-RR0001