

2014

Annual Report
L'Arche Greater Vancouver
and
The L'Arche Foundation of
Greater Vancouver





Identity and Mission Statements
International Federation of
L'Arche Communities:

Identity Statement:

We are a people who live with and without disabilities, who develop
 communities through relationships of trust and mutual respect. We
 are a people who live in communities where everyone is valued and
 everyone has a role to play.

Mission Statement:

Our mission is to... give people with disabilities the opportunity to
 live in communities where they can live fully and with dignity. We
 seek to create environments where everyone is valued and everyone
 has a role to play. We are a people who live in communities where
 everyone is valued and everyone has a role to play.

L'Arche Greater Vancouver **April 1, 2013 - March 31, 2014** **Annual Report**

Table of Contents

1. Message from the President of L'Arche Greater Vancouver	4
2. Message from the President of the L'Arche Foundation of Greater Vancouver	6
3. Message from the Community Leader/ Executive Director	8
4. Reports	
Day Programs	11
Human Resources	13
Residential	15
6. Our Houses	16
7. Our Big Numbers	18
8. Our Financial Picture	20
9. Our Corporate and Community Supporters	22

President of L'Arche Greater Vancouver

From the perspective of the L'Arche Greater Vancouver Directors, in looking back over the past year we can see a continuity of effort and some new areas of activity.

The Board approved a new four year Community mandate commencing in May of 2013. Denise Haskett was willing to serve as Community Leader for another four year term, was strongly affirmed by the Community, and subsequently appointed by the Board.



We continue our practice of joint meetings with the L'Arche Foundation Board to foster greater communication and awareness of our differing roles in service of L'Arche's mission. These occasions provide the added benefit of some social "team-building" opportunities.

We're all aware that housing requirements for people in our community continue to evolve in living spaces that are failing to keep-up with them, especially in relation to physical accessibility. Following-up on an initial consultant's report, a Housing Committee was struck and has done some further exploratory work. As the Housing Committee work proceeds, both our Boards will collaborate on developing strategies for obtaining the substantial funding that will be required.

Director Paul Mosca has taken on the task of working with the leadership team to ensure our risk-management plan meets the Community's needs. The Board also reviewed and updated our governance document.

Throughout the year we assisted with various events hosted by L'Arche including a public talk with Ruth Patterson, the annual Ark Builders brunch, and our annual Christmas concert.

At each board meeting members have taken turns to offer insights into one aspect of L'Arche Canada's servant leadership model.

Our Nominations Committee continues an active search for new Directors and has several prospective candidates.

We have also done some "nuts-and-bolts" work on developing a formal lease agreement between L'Arche Greater Vancouver and the L'Arche Foundation which owns our Community properties. We're grateful to our Director Garth Evans who provided us with his legal expertise in this matter.

On the basis of our past progress, I think we can look forward to another busy and rewarding year.

Tom Nowak
President

L'Arche Greater Vancouver Board of Directors

Tom Nowak
Garth Evans
Ken Lee
Paul Mosca
Ash Abhyankar
Susan Cush

President of the L'Arche Foundation of Greater Vancouver

The past fiscal year was filled with opportunities and hope. We strengthened relationships with our existing donors and built new relationships. Together, we share a vision of recognizing the gifts of our community and inviting the wider community to participate in sustaining this dream.



On May 24, 2014 we hosted a public talk by Rev. Dr. Ruth Patterson titled “Pathways to Peace” at UBC. Her talk was inspiring and attracted attendees from various faith backgrounds. Also, in the audience were 150 delegates who were in town to attend L’Arche Canada’s National Assembly.

In the fall we hosted two important events. In early October we invited our major donors to the Annual Ark Builders Brunch to thank them for their support and introduce them to people whose lives have been changed at L’Arche. Later in the month the Business Advisory Committee held its inaugural meeting. Working under the direction of the Foundation’s Board of Directors, the role of the Business Advisory Committee is to connect L’Arche with potential sponsors, partners and funding sources. The Committee members are Paul Holden (CEO, Burnaby Board of Trade), Roger Steers (Managing Principal, Read Jones Christoffersen Ltd. Consulting Engineers), Jindy Bains (Branch Manager, Vancity South Burnaby Community Branch). The Committee is chaired by Foundation Board member Joan Isac (Community and Aboriginal Relations Manager, Fortis). L’Arche personnel representatives are Denise Haskett (Executive Director/Community Leader), Liz MacKeigan (Director of Finance and Support Services) and Sig Stark (Director of Fund Development).

At Christmas we always look forward to our Benefit concert. Once again, The Gallery Singers entertained us with an outstanding performance. Our community and guests thoroughly enjoyed the concert which helps us raise funds for the L’Arche Canada Solidarity program.

I am thankful for the Foundation Board members who continue to be

mission and vision focused. They are Audrey Staudacher, Joan Isac and joining us this year is Susan Cush as the liaison Board Member from the L'Arche Greater Vancouver operations Board. The Foundation Board has a strong rapport with the operations Board and together we are committed to the shared goal of keeping L'Arche well supported and strong.

L'Arche is a unique community. One that is truly welcoming. For many visitors who enter the doors, there is an unexplained feeling of peace and serenity. This community is my shelter, a reminder that we all have gifts to share, a place to belong, and many hearts that care. I am grateful for the community, the staff and the volunteers who have dedicated their time and talents. I want to thank Denise Haskett and her team and Tom Nowak, President of the L'Arche Greater Vancouver Board for their support and co-operation. Most of all we thank God for His grace, centering us in faith to know that in Him all things are possible. We look forward to the next fiscal year to celebrate L'Arche Greater Vancouver's 40th anniversary and L'Arche's 50th anniversary around the world.

Penny Lim
President

L'Arche Foundation of Greater Vancouver Board of Directors

Penny Lim
Denise Haskett
Joan Isac
Susan Cush
Audrey Staudacher

Community Leader/Executive Director

It has been a significant year of reflection and looking ahead at L'Arche Greater Vancouver. In May of 2013 we began a new four year mandate which outlines desired areas of growth and focus for the community. The process, which is led by the L'Arche Western Canada Regional Leader, involves extensive consultation with the Community and the Board.



The key points in this mandate include a commitment to further integrate our Identity and Mission, further develop all members' leadership gifts, find new opportunities to build relationships in our neighbourhood and engage with society, continue planning for new housing options while responding to current members' needs, explore welcoming new members, and grow in our participation as a member community of the International Federation of L'Arche. We have set ourselves some big goals and dreams!

In June 2013 L'Arche Greater Vancouver hosted a public talk at UBC with Reverend Doctor Ruth Patterson from Northern Ireland. Ruth is a friend and colleague of Jean Vanier and an international speaker on the subject of peacemaking. She also gave a day of retreat for assistants and board members entitled 'Called to be Peacemakers through the experience of L'Arche'. It was a powerful and nourishing day that challenged us to reflect on this call both in our daily life together and in the world in which we live.

It was also an exciting year of welcoming our brothers and sisters from other L'Arche communities. The L'Arche Canada National Assembly was held for the first time in Vancouver at UBC with representatives from all 29 communities across the country attending. L'Arche International also held their meetings here. We had the opportunity to provide daily hospitality as well as hosting a dinner where we heard wonderful stories about L'Arche communities around the globe. We are truly blessed to be part of an International Federation.

From November 2013 to March 2014 we participated in intensive training and implementation of the L'Arche Canada Servant Leadership model which provides concrete tools for all community members to engage with the Identity and Mission of L'Arche and grow in our core values.

In the coming months L'Arche Greater Vancouver will be forty years old and the first L'Arche community founded by Jean Vanier in France will be fifty! We look forward to a year of celebration ahead as we plan to mark both anniversaries in a variety of ways.

Our annual theme reflects our gratitude for God's faithfulness. "God has blessed you and watched over your journey these 40 years...you have lacked nothing" (Deut. 2:7). We look forward to the next year with much joy and hope!

I would like to express heartfelt thanks to my leadership team, our boards and each person in the community for being here and faithfully living our mission each day. It is people who create community!

With much gratitude for all that has been, and all that is yet to come.

Denise Haskett,
Community Leader/Executive Director



Denise with Ruth Patterson
Photo by: Warren Pot



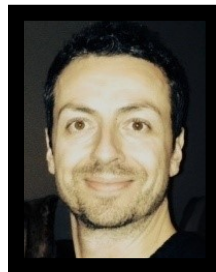
Neighbours Helping Neighbours



The Emmaus Day Program

Day Programs

It has been another busy and exciting year for L'Arche Greater Vancouver's two Day Programs, the Emmaus Center and Neighbours Helping Neighbours. Daily activities continue to be centered on our Identity and Mission and assist in revealing the talents of our participants and fostering their growth and skill development. The activities strengthen bonds within each group and help to build relationships with the wider community.



Some of the Emmaus highlights included preparing the Art Together Project, for the 5th Annual Art of Being Together event, the Jubilee Art Show and Mary Hillhouse's poetry book launch in December. The Knit Wits, the Emmaus knitting club, designed and fashioned a beautiful Nativity Scene for our Christmas celebrations. Another artistic as well as practical and helpful production in Emmaus was Sue Allen's Fire Safety Video. This collaborative

effort was appreciated by the L'Arche community and has garnered attention from around the Region.

Along with their usual jobs such as mowing lawns, weeding and raking, Neighbours Helping Neighbours (NHN) have also participated in some unique and challenging activities. They helped five people move into new homes, fixed or replaced three doors, worked on three gate and fence projects and installed a new sink and shower.

The largest and most time consuming project was the construction of an outside staircase and banister. This took over two months to complete but allowed one senior citizen to once again feel safe and secure in accessing her backyard and to accomplish simple tasks such as taking out her garbage. NHN participants gained the knowledge of how to measure and cut wood, how to mix and pour concrete but most of all gained the trust, respect and friendship of one of their customers.

With strong leadership, dynamic teams and eager participants the day programs continue to flourish. There is always room to grow, and more challenges to face but with such a solid foundation whatever the future holds will be welcomed with open arms.

Peter McKinley
Director of Day Programs

Human Resources in Numbers

Number of Permanent Personnel : 49
Number of Casual Support Personnel: 20
Number of Volunteer Hours: 2741
Number of Languages Spoken: 17

Length of Service

1 year 7	2-4 years 7	4-8 years 14	8+years 21
-------------	----------------	-----------------	---------------

Age Groups

19-30 17	31-40 8	41-50 11	51-60 8	61+ 4
-------------	------------	-------------	------------	----------



Human Resources

Throughout this year, as in previous years, I have been aware that L'Arche is God's work. Through various recruitment endeavours He brings us the right people at the right time. This year we welcomed six new assistants from Japan, Hungary, Germany and Canada.



During the last year we introduced L'Arche Canada's Servant Leadership Model which translates our Identity and Mission into day to day actions in community. It is intended to inspire, teach, energize, focus and develop leaders at every level throughout the organization.

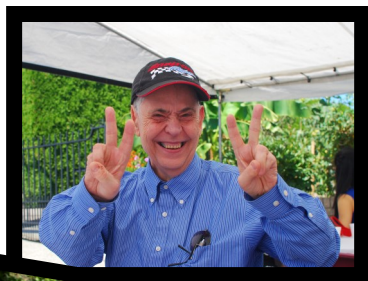
Part of the model includes the Growing as Servant Leaders Program that develops and implements human resource tools and best practices to support the development of leaders from their earliest months at L'Arche. This includes new role guides, orientation, review and evaluative processes, individual development plans, accompaniment and mentoring for each individual. We were pleased to have Tammy Bartel from L'Arche Canada lead three workshops as we rolled out this new program.

Related to Servant Leadership were the Compassionate Communication workshops that gave everyone guidance and practice in giving feedback in a constructive way, addressing conflict and offering positive behaviour support.

We are grateful to have received a grant from PricewaterhouseCoopers which made it possible to bring in workshop presenters and open training to all personnel.

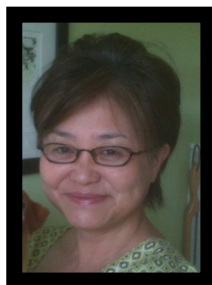
Last, but certainly not least, I want to acknowledge the volunteers who have assisted us in so many ways. You've been there in Board meetings, day programs, our homes, administration and in executing special events. Thank you for giving L'Arche your time and talent; you are an essential part of our community.

Annette Kuhn
Director of Human Resources



Residential Programs

It's been a yet another remarkable year for us in the homes sharing life in community together and faithfully living our mission. With the average age of the people we support surpassing 60 years, our lives are not without challenges. We continue to experience an increase in people's care and accessibility needs and a need for more specialized training required for assistants supporting people in our homes. It is a blessing that we have each other and the people who lend us support within and beyond the Community.



I am grateful for the strength of each of the teams in the homes and how well they work together. There has been consistency with the House Leaders and they are carrying their roles well. This was particularly evident when there were moves by people between houses in the past year. The changes were positive for everyone and they settled into their new homes quickly.

Lastly, I would like to thank Kuniko Fedoruk, Residential Programs assistant, and House Leaders for their hard work and dedication, and especially the people we share life with in community and who continue to guide us through it all.

Akiko Iwataki
Director of Residential Programs

Our Houses



Bethel House



Creation House



The Crossing



Emily House



Nazirah House



Unity House

Our Big Numbers

Bethel House

Garth emptied the dishwasher **365** times

Barbara swam around the lazy river **18** times

Garth braved the waterslide **once**

We shared **260** pots of tea together

Creation House

Over **3,000** bottles were brought to the recycling centre by Wayne and Kevin

Wayne and Kevin volunteered **145** hours at the Salvation Army and organized over **4,000** hangers

We listened to **17,520** country songs with Ron

The Crossing

Made **36** cards for others

Welcomed **140** guests for dinner

Spent **156** hours biking together

Went on **108** weekend outings together

Emily House

Mary folded **728** loads of towels

Philip biked **182** kilometers

Rose Marie picked up bread **52** times

Melina made **362** cards for others

Nazirah House

Celebrated **16** birthdays

Hosted **75** guests

Visited Tim Hortons **96** times

Watched **104** movies together

Our Big Numbers

Unity House

Walked a combined total of **1460** kilometers together
 Delinda, Linda and Lawrence have scored **23,400** points bowling
 Lawrence greeted and said good night to **2,190** people
 Ilonka tidied the L'Arche main hallway **365** times

Emmaus

Enjoyed **240** meals together
 Hosted **25** celebrations
 Took out recycling **48** times
 Welcomed **100** guests
 Guy changed the date on the calendar **every** day

Neighbours Helping Neighbours

Worked a grand total of **639.5** hours
 Volunteered **135** hours for **4** other organizations
 Served **70** customers **15** of which were new
 Mowed **164** lawns
 Delivered **241** meals for Meals on Wheels
 Helped customers with shopping or banking **58** times
 Shoveled snow for **20** customers.
 Fixed **4** fences
 Built **1** outside back staircase

Community

We had **45** prayer services
 Sent **20** people on retreats, L'Arche workshops, and/or regional gatherings
195 new friends joined us as donors

Our Financial Picture

L'Arche Greater Vancouver—Audited

	<u>Year ended</u> <u>March 31, 2014</u>	<u>Year ended</u> <u>March 31, 2013</u>
<u>Revenues</u>		
Provincial Grants	\$ 2,363,413	\$ 2,481,461
Donations from L'Arche Foundation of Greater Vancouver	121,140	112,237
Other	180,173	176,503
	2,664,726	2,770,201
<u>Expenses</u>		
Direct program costs	2,112,935	2,010,913
Facility costs	305,166	326,858
Administrative costs	312,747	349,609
	2,730,848	2,687,380
Excess (Deficiency) of revenue over expenses	\$ (66,122)	\$ 82,821

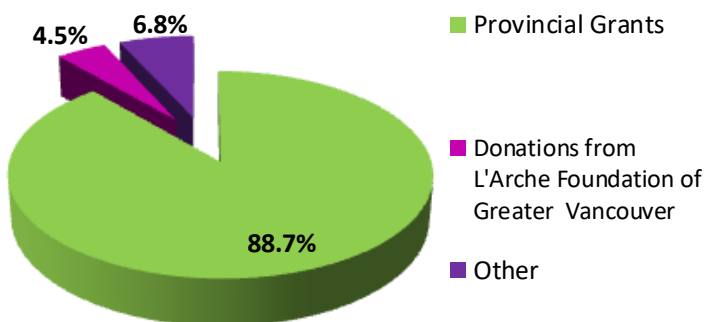
Numbers taken from L'Arche Greater Vancouver's Audited Financial Statements for the year ended March 31, 2014.

L'Arche Greater Vancouver is assisted in its mission by the L'Arche Foundation of Greater Vancouver, a registered charity dedicated to finding funds from non-government sources in support of L'Arche Greater Vancouver. The Foundation is responsible for building modernization and improvements as well as new building projects.

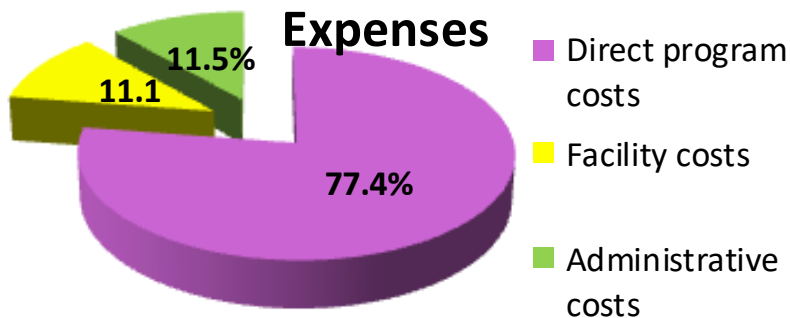
Full audited financial statements for L'Arche Greater Vancouver and the L'Arche Foundation of Greater Vancouver are available upon request.

Our Financial Picture

L'Arche Greater Vancouver - Revenues



L'Arche Greater Vancouver - Expenses



Our Corporate and Community Supporters

Andrew Mahon Foundation	Earls Restaurant
Arts Club Theatre	e.b.o Restaurant & Lounge
B.E. Digitally Hip Corporation	Fiore Fine Foods
Barbara-Jo's Books to Cooks	Fluor
BC Housing	Fortis BC
Best Buy	FS Financial Strategies
BlueSky Properties	Gardenworks at Mandeville
Botanus	Granville Island Toys
Burnaby Board of Trade	GVC Credit Union
Burnaby Newsleader	H.R. MacMillian Space Centre
Canadian Martyrs Parish	IBM Canada Ltd.
Cactus Club	J & G Servant Foundation
Catholic Women's League of St. Joseph's Church	Joe's Table Cafe
Catholic Women's League, St. Mary Vancouver	Knights of Columbus (BC) Charity Foundation
Catholic Women's League of St. Peter's Parish	Knights of Columbus, Fraser Valley Council, No. 2552
City of Burnaby	Knights of Columbus, Holy Cross Council, No. 5423
Cobs Bread	Knights of Columbus, No. 8853
Columbia-Bowell Funeral Chapel	Knotty Toys
Community Living BC	L'Occitane
CTV	Lure Salon
D & D Reesor Family Holdings Inc.	Mackin Creek Farm
David's Tea	Mark Anthony Brands

Our Corporate and Community Supporters

Made in Print	St. Anthony of Padua Fraternity, S.F.O
Ming Wo	St. Augustine's Council Catholic
Museum of Anthropology	St. Joseph the Worker Parish
Morrey Nissan	St. Thomas Anglican Church
Nao Sushi	Safeway Kingsway
Pacific National Exhibition	Save-on-Foods
Personas Restaurant	Sisters of Instruction of the Child Jesus
Phoenix Perennials	Starbucks - Market Crossing
Point Blank Creative	Steelhead Business Products
Pony Pals Therapeutic Riding	Team TELUS Cares
PricewaterhouseCoopers Canada Foundation	Telus Communication Inc.
Provincial Employees Community Services Fund	The Dominicans of St. Mary's
Province of British Columbia	The Gallery Singers
Regent College	The Keg Steakhouse & Bar
Rockford Grill	Uprising Breads
Romers Burger Bar	VanCity, South Burnaby Community Branch
Science World	Vancouver Aquarium
South Burnaby United Church AOTS Men's Club	Valley Bakery
South Burnaby United Church Women	White Spot



L'Arche Foundation of Greater Vancouver

7401 Sussex Ave. Burnaby BC
V5J 3V6 604-435-9544
www.larchevancouver.org

Charitable Registration No. 137648671-RR0001