

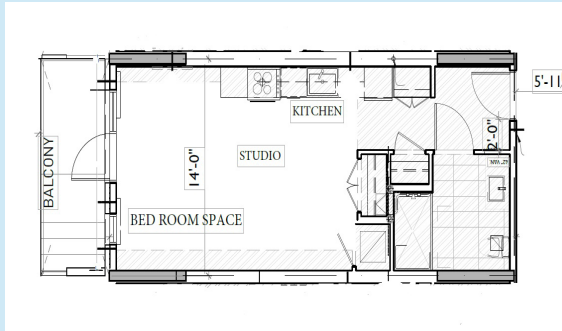
## STUDIO SUITES

Unit sizes starting at 420 square feet

### RENT GEARED TO INCOME HOUSING:

Rent from \$1,015 to \$1,450

Household income \$40,600 - \$58,000



Sample layout of a Studio unit



## UNIT FEATURES

- Stainless steel appliances
- Vinyl plank flooring
- Balcony
- Access to Building Amenities
- No pets
- No smoking

## COMMUNITY AND BUILDING FEATURES

- Opportunity to be part of an intentional community
- Community Kitchen
- Large multipurpose rooms
- Rooftop patio space
- Secure underground parking
- Underground bicycle storage
- Laundry facilities
- Close to Metrotown and Skytrain

## RENTAL INFORMATION

Since L'Arche Greater Vancouver is a Housing Provider under the **BC Housing Registry** all prospective tenants are required to apply through BC Housing first.

For more information contact:  
[property@larchevancouver.org](mailto:property@larchevancouver.org)

L'Arche Greater Vancouver  
7415 Sussex Ave Burnaby BC V5J 0K1  
604-435-9544  
[www.larchevancouver.org](http://www.larchevancouver.org)  
Charitable Registration No. 1376468671-RR0001



## Rental Homes



**BUILDING A PLACE  
WHERE WE ALL  
BELONG**

## ONE BEDROOM SUITES

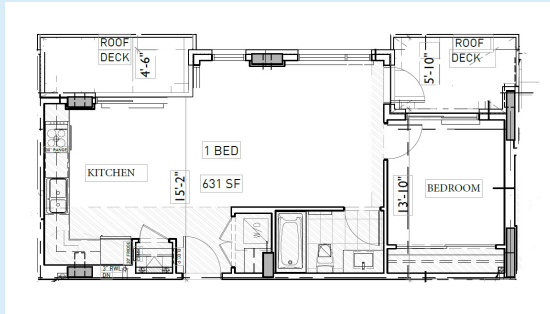
Unit sizes starting at 603 square feet

### RENT GEARED TO INCOME:

Rent from \$1,015 to \$1,450  
Household income \$40,600 - \$58,000

### BELOW MARKET HOUSING:

Rent \$2,119.50  
Household income \$58,001 - \$84,780



Sample layout of a One Bedroom Unit

## TWO BEDROOM SUITES

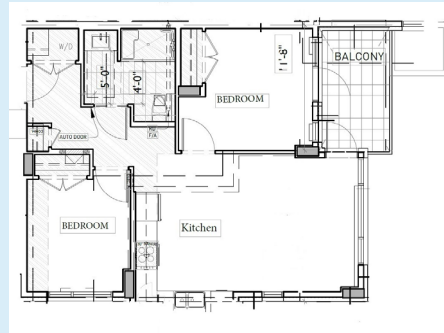
Unit sizes starting at 798 square feet

### RENT GEARED TO INCOME:

Rent from \$1,260 to \$1,800  
Household income \$50,400 - \$72,000

### BELOW MARKET HOUSING:

Rent \$3,027.50  
Household income \$72,001 - \$134,140



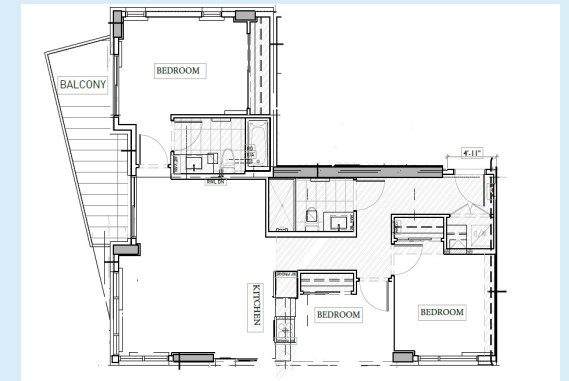
Sample layout of a Two Bedroom Unit

## THREE BEDROOM SUITES

Unit sizes starting at 968 square feet

### BELOW MARKET HOUSING:

Rent \$3,353.50  
Household income \$86,001 - \$134,140



Sample layout of a Three Bedroom Unit

